

## Certificate of Analysis

**Product:** HIS-1000 and HIS-1010

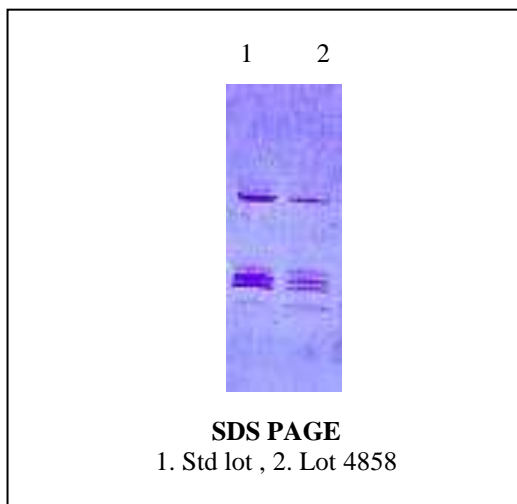
**Lot Number:** 4858

**Appearance:** Dry white powder

### ELISA Absorbances:

Antibody	Standard	Lot 4858
Positive 1	0.739	0.983
Positive 2	0.579	0.709
Positive 3	0.444	0.545
Negative 1	0.146	0.164

### SDS-Page results:



**Material of Origin:** Chicken red blood cells from USA origin

This product meets or surpasses ImmunoVision specifications.

Quality Control Director

1-15-2007  
Date