

Certificate of Analysis

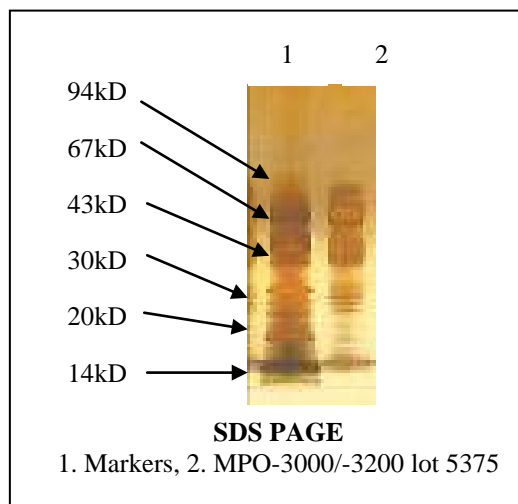
Product: MPO-3000/MPO-3200

Lot Number: 5375

Appearance: Lyophilized solid

Expiration Date: 01/August/2016

Material of Origin: Human Promyelocytic cell line



Parameter	Specification	Result
Protein Conc. (Coomassie Assay)	0.86 - 1.37mg/ml	1.22 mg/ml
Absorbance 430nm	1.10 to 1.20	1.15
RZ (A_{430} / A_{280})	0.74 to 0.82	0.77
Purity by analytical gel filtration	>90%	96.8 %
Enzymatic activity	1600 to 2400u/mg	1894.5 u/mg
Antigen titer by capture ELISA	50 to 200 % of standard	124 %
Antigen titer by direct coat ELISA Vs Positive Antibody 1 Vs Positive Antibody 2 Vs Positive Antibody 3	80 to 120 % of standard	94 % 85 % 91 %
Absorbance by direct coat ELISA Vs Negative Antibody 1 Vs Negative Antibody 2 Vs Negative Antibody 3	<0.050	0.018 0.016 0.029

This product meets or surpasses ImmunoVision specifications.

Quality Control Director

8/10/2011
Date