

Certificate of Analysis

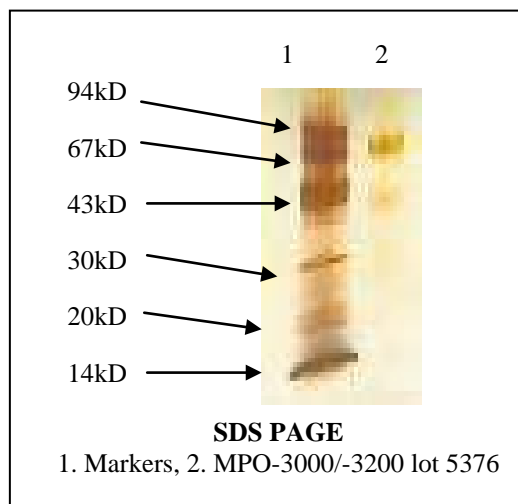
Product: MPO-3000/MPO-3200

Lot Number: 5376

Appearance: Lyophilized solid

Expiration Date: 01/August/2016

Material of Origin: Human Promyelocytic cell line



Parameter	Specification	Result
Protein Conc. (Coomassie Assay)	0.86 - 1.37mg/ml	1.36 mg/ml
Absorbance 430nm	1.10 to 1.20	1.15
RZ (A_{430} / A_{280})	0.74 to 0.82	0.76
Purity by analytical gel filtration	>90%	95.4 %
Enzymatic activity	1600 to 2400u/mg	1828.2 u/mg
Antigen titer by capture ELISA	50 to 200 % of standard	125 %
Antigen titer by direct coat ELISA		
Vs Positive Antibody 1	80 to 120 % of standard	98 %
Vs Positive Antibody 2		85 %
Vs Positive Antibody 3		82 %
Absorbance by direct coat ELISA		
Vs Negative Antibody 1	<0.050	0.015
Vs Negative Antibody 2		0.015
Vs Negative Antibody 3		0.025

This product meets or surpasses ImmunoVision specifications.

Quality Control Director

8/10/2011
Date