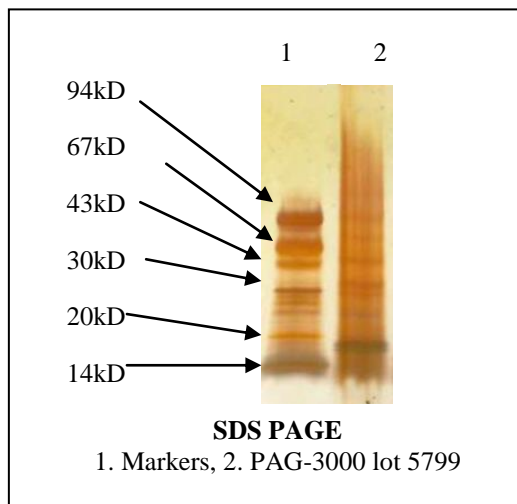


# Certificate of Analysis

**Product:** PAG-3000  
**Lot Number:** 5799  
**Appearance:** Clear Frozen Liquid  
**Protein Concentration:** 0.459 mg/ml  
**Absorbance at 280nm:** 3.32 at 1:1 dilution



**ELISA Absorbances:**

| Antibody          | 1 unit/well |          | 0.5 unit/well |          |
|-------------------|-------------|----------|---------------|----------|
|                   | Standard    | Lot 5799 | Standard      | Lot 5799 |
| <b>Positive 1</b> | 1.734       | 2.069    | 1.822         | 1.859    |
| <b>Positive 2</b> | 2.065       | 2.205    | 2.079         | 2.117    |
| <b>Positive 3</b> | 2.008       | 2.152    | 1.910         | 1.929    |
| <b>Negative 1</b> | 0.104       | 0.042    | 0.085         | 0.034    |
| <b>Negative 2</b> | 0.056       | 0.056    | 0.045         | 0.037    |
| <b>Negative 3</b> | 0.074       | 0.053    | 0.053         | 0.052    |

**Material of Origin:** Rabbit Thymus from North American origin

*This product meets or surpasses ImmunoVision specifications.*

\_\_\_\_\_  
 Quality Control Director

\_\_\_\_\_  
 Date 10/29/2014