

Certificate of Analysis

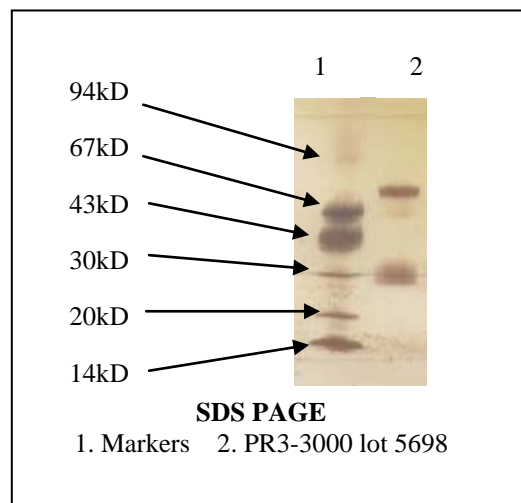
Product: PR3-3000, PR3-3100

Lot Number: 5698

Appearance: Frozen liquid

Expiration Date: 01/March/2020

Material of Origin: Human Promyelocytic cell line



Parameter	Specification	Result
Protein Conc. (A_{280})	0.3 to 0.8 mg/ml	0.7 mg/ml
Antigen titer by capture ELISA	50 to 200 % of standard	140 %
Antigen titer by direct coat ELISA Overall	>80% of standard	154%
Vs Positive Antibody 1	>75 % of standard	204 %
Vs Positive Antibody 2	>75 % of standard	133 %
Vs Positive Antibody 3	>75 % of standard	124 %
Noise/Signal ratio by direct coat ELISA		
Vs Normal serum	<0.071	0.013
Vs MPO antibody	<0.034	0.001
Vs DNA antibody	<0.019	0.003
Vs SSA antibody	<0.029	0.012
Vs SSB Complex antibody	<0.039	0.004
Vs SCL-70 antibody	<0.031	0.017
Vs Smith antibody	<0.048	0.010
Vs Sm/RNP antibody	<0.029	0.012
Vs Jo-1 antibody	<0.029	0.016

This product meets or surpasses ImmunoVision specifications.

Quality Control Director

11/7/2013
Date