

# Certificate of Analysis

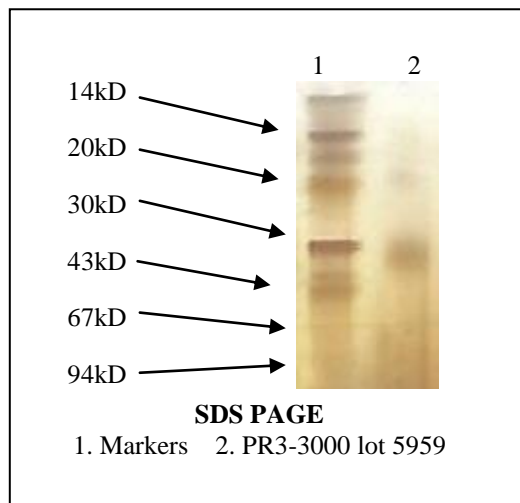
**Product:** PR3-3000, PR3-3100

**Lot Number:** 5959

**Appearance:** Frozen liquid

**Expiration Date:** 01/May/2023

**Material of Origin:** Human Promyelocytic cell line



Parameter	Specification	Result
Protein Conc. ( $A_{280}$ )	0.3 to 0.8 mg/ml	0.384 mg/ml
Antigen titer by direct coat ELISA Overall	>80% of standard	87%
Vs Positive Antibody 1	>75 % of standard	75%
Vs Positive Antibody 2	>75 % of standard	94%
Vs Positive Antibody 3	>75 % of standard	92%
Noise/Signal ratio by direct coat ELISA		
Vs Normal serum	<0.071	0.016
Vs MPO antibody	<0.034	0.005
Vs DNA antibody	<0.019	0.013
Vs SSA antibody	<0.029	0.022
Vs SSB Complex antibody	<0.039	0.015
Vs SCL-70 antibody	<0.031	0.028
Vs Smith antibody	<0.048	0.023
Vs Sm/RNP antibody	<0.029	0.022
Vs Jo-1 antibody	<0.029	0.024

This product meets or surpasses ImmunoVision specifications.

*Thamash Griffith*

\_\_\_\_\_  
Quality Director

5/20/2016  
\_\_\_\_\_  
Date