

Certificate of Analysis

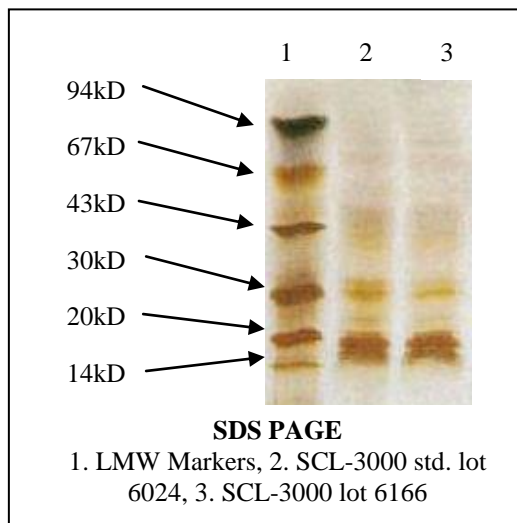
Product: SCL-3000

Lot Number: 6166

Appearance: Clear Frozen Liquid

Expiration Date: 01May2025

Material of Origin: Bovine Thymus
Of North American origin



Parameter	Specification	Result
Protein Concentration by BCA	0.21 to 0.37mg/ml	0.223 mg/ml
Absorbance 280nm	0.176 to 0.577	0.340
Antigen titer by direct coat ELISA		
Vs Positive antibody 1	75-125%	98%
Vs Positive antibody 2	75-125%	91%
Vs Positive antibody 3	75-125%	90%
Mean	80-120%	93%
Noise/Signal ratio by direct coat ELISA		
Vs Normal serum	<0.085	-0.005
Vs SSA antibody	<0.080	-0.006
Vs SSB antibody	<0.029	-0.018
Vs Sm antibody	<0.075	-0.009
Vs Sm-RNP Complex antibody	<0.081	0.013
Vs Jo-1 antibody	<0.094	0.023
Vs Mitochondrial antibody	<0.122	0.001

This product meets or surpasses ImmunoVision specifications.

Amey

Quality Director

6/15/2018

Date