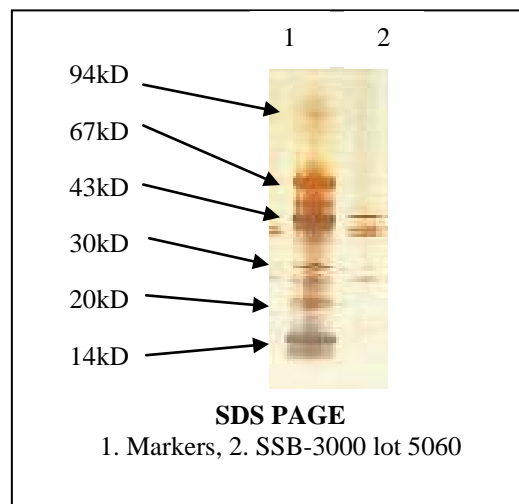


# Certificate of Analysis

**Product:** SSB-3000  
**Lot Number:** 5060  
**Appearance:** Frozen clear liquid  
**Expiration Date:** 01/Feb/2015  
**Material of Origin:** Bovine Spleen from USA origin



Parameter	Specification	Result
Protein Concentration by BCA	0.073-0.837 mg/ml	0.139mg/ml
Antigen titer by direct coat ELISA		
Vs Positive antibody 1	75-125%	98%
Vs Positive antibody 2	75-125%	99%
Vs Positive antibody 3	75-125%	100%
Mean	80-120%	99%
Noise/Signal ratio by direct coat ELISA		
Vs Normal serum	<0.037	.007
Vs SSA antibody	<0.069	.066
Vs SCL-70 antibody	<0.114	.005
Vs Sm antibody	<0.053	0
Vs Sm-RNP Complex antibody	<0.037	.005
Vs Mitochondrial antibody	<0.045	.006

**Double Immunodiffusion Results:**

	Standard	Lot 5060
<b>Titer vs specific antibody</b>	1:1	1:2
<b>Reaction with anti-host serum proteins</b>	Negative	Negative

**Absorbance at 280nm:** 0.6102 at 1: 1 dilution  
**This product meets or surpasses ImmunoVision specifications.**

*TL MK*

\_\_\_\_\_  
 Quality Control Director

\_\_\_\_\_  
 Aug 1, 2008  
 Date